

LAKE GEORGE AQUATIC CONCERNS

[Click here for: Walleye Restocking](#) [Weed Treatment](#) [Zebra Mussels](#)

[Click here for a survey form to indicate your satisfaction to the weed treatment program](#)

[Click here for a word document containing pictures of aquatic plants](#)

EURASIAN MILFOIL

Concern for the water quality of the lake has greatly increased with the rapid growth of the Eurasian Milfoil. This is a non-native species of weed which has an *incredible ability to reproduce itself* very rapidly in lake waters in both summer and winter.

Aquatic Weed Control Co. (Jim Donahue) advises there are three areas of urgent concern, the Millpond, the Inlet from Silver Lake and an area around the Michigan Boat Launching Facility.

Your Cottage Owners Association is urgently seeking funds to "reduce the proliferation of this weed in the lake before it reaches catastrophic proportions. The State of Indiana has a funding mechanism whereby the treatment costs can be subsidized with the use of a LARE Grant. Unfortunately, Michigan has no similar reimbursement program. An appeal is underway to fund the weed control program and each lake property owner is asked to donate to this program. Send checks to The Lake George Conservancy, PO Box 564, Fremont, Indiana 46737. Additional infestations have been

Map of current Eurasian Milfoil found on the lake early summer 2006

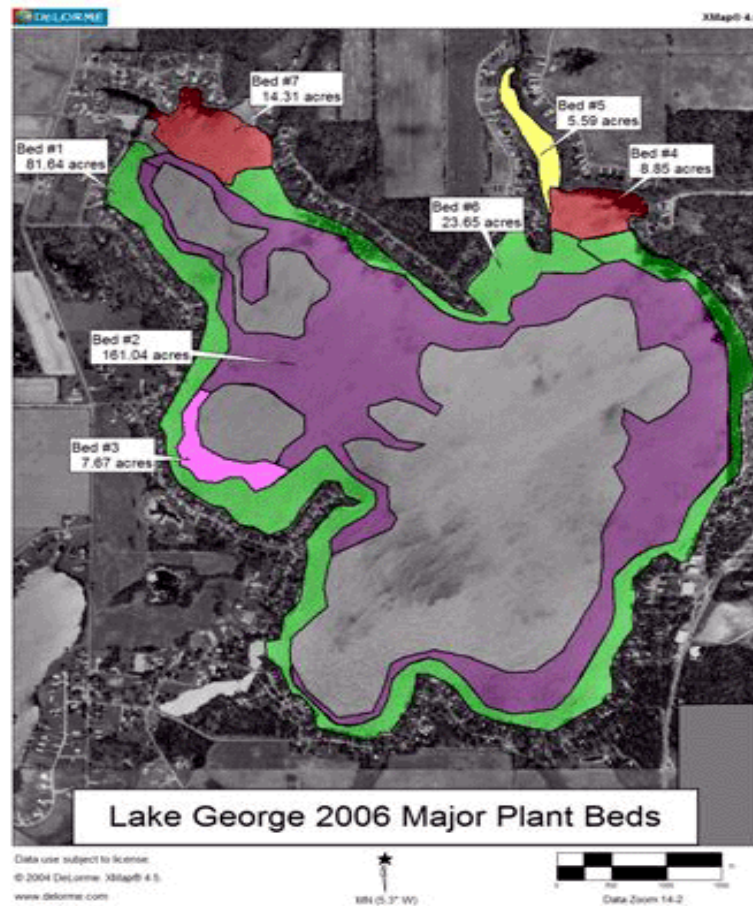
discovered in the spring of 2008 and we will have this problem on a continuing basis. Help control this problem before it grows out of control and spreads outward thickening as it grows and makes swimming and boating impossible. (See photo). Postponing treatment means less weed treatment and a greater expense next year.

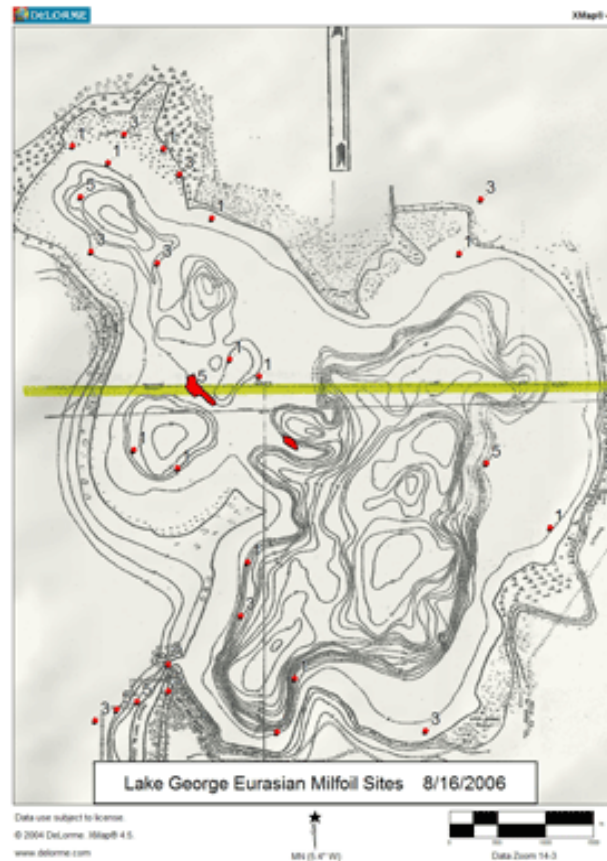
The adjacent map ---> shows the results of a late summer weed survey. The higher numbers represent a thicker concentration of Milfoil.

This survey was made using a tool similar to a rake with two heads facing opposite directions. The greater the number of weeds removed with the tool, the higher the number. The two maps are different because one was used in the LARE grant application.

Aquatic Solutions advises that these weeds will grow out from the shore to a point where light penetration becomes so low the weed cannot exist. In many areas of the lake this could be 200 feet from the shoreline.

Note: There is another species of Milfoil different from the Eurasian variety - the Northern Milfoil.





Late summer survey results of Eurasian Milfoil in Lake George

To get a better idea of the enormous nature of this problem, Google Eurasian Milfoil and Hydrilla - the newest invasive species and perhaps more trouble.

TREATMENT There is one treatment currently used to eradicate this species - chemicals. Several firms have been contacted and requested bids to treat selected areas of the lake. In addition there are two biological treatments under study using weevils and mites. Strangely, weevil treatments have been successful in some lakes and not in others. For this reason, chemical

The company contracted by the Lake George Cottage Owners Association to treat the Eurasian Milfoil is

Aquatic Weed Control
Owned by Jim Donahoe
P.O. Box 325
Syracuse, IN 46567
Phone 574-533-2597

Contact by email: jim@aquaticweedcontrol.com

If you have questions about weeds and need assistance, please contact

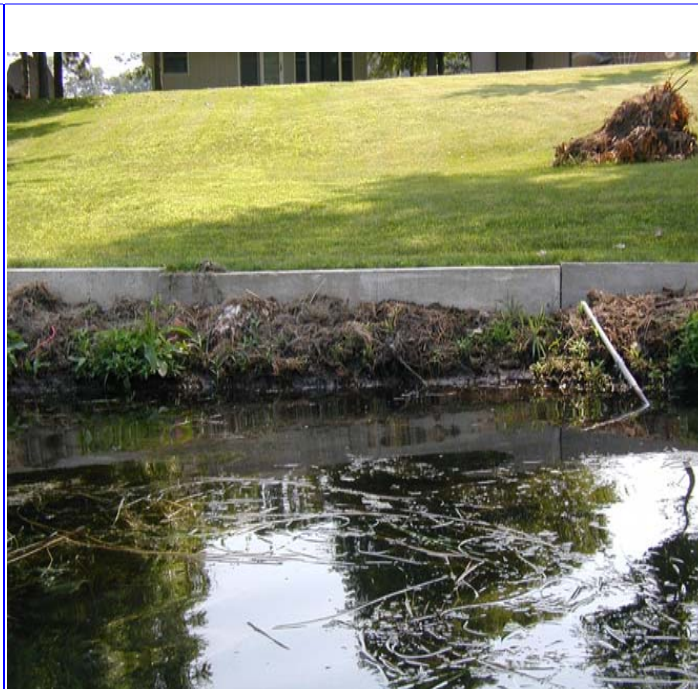
treatment is considered more positive and will continue at Lake George.

Jim Donahoe. Remember the interaction of certain commonly used chemicals is significant and may neutralize your application. You are urged to check with Aquatic Weed Control

[Top](#) [Home](#)

Photographs of Asian Milfoil found in Lake George in August 2006





[HOME](#) [TOP](#)