



Asian Clam Rapid Response Pilot Project Press Release

Friday, October 29, 2010 7:14 AM

From: "Hilary Smith" <hsmith@tnc.org>

To: cce-apipp-l@cornell.edu

6 Files (189KB)

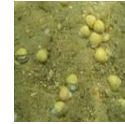


image001.p

image003.jf

image004.jf

image005.jf

image006.jf

image007.jf

<This message is being sent via the APIPP PRISM Listserv.>

-----Original Message-----

From: Kathy Jarvis [mailto:KJarvis@lcbp.org] <mailto:[mailto:KJarvis@lcbp.org]>

Sent: Thursday, October 28, 2010 4:10 PM

To: Kathy Jarvis

Subject: NEWS RELEASE: Asian Clam rapid response pilot control project in Lake George, NY gets help from local partners and Lake Tahoe scientists

News Release

[cid:[image007.jpg@01CB76C2.EA489770](#)]For Release: October 29, 2010

Regarding: Asian Clam rapid response pilot control project

Date: October 28, 2010

Contact: Sandra Nierzwicki-Bauer, Darrin Fresh Water Institute, Rensselaer (518) 644-3541, nierzs@rip.edu <mailto:nierzs@rip.edu> or Meg Modley, Lake Champlain Basin Program (802) 372-3213, mmodley@lcbp.org <mailto:mmodley@lcbp.org>

Asian Clam rapid response pilot control project in Lake George, NY gets help from local partners and Lake Tahoe scientists

The Rensselaer Polytechnic Institute Darrin Fresh Water Institute (DFWI) is leading a pilot project to assess the effectiveness of benthic barrier mats in controlling Asian clam (*Corbicula fluminea*), the newest aquatic invasive species in Lake George, NY. The pilot project is advised by the Asian Clam Rapid Response Task Force. Partners include technical experts from Lake Tahoe where spread prevention techniques for Asian clam are already underway.

The Asian Clam Rapid Response Task Force includes members from the Darrin Fresh Water Institute, Adirondack Park Agency, New York State Department of Environmental Conservation, Fund for Lake George, Lake George Park Commission, Adirondack Park Invasive Plant Program, Lake George Watershed Coalition, Lake George Association, and Lake Champlain Basin Program. Additional technical and scientific experts from Lake Tahoe, Bateaux Below, Inc., InnerSpace Scientific Diving, and Scientific Diving International are assisting with species identification, surveys, the pilot project, and population control planning.

In late September, DFWI hosted two visiting lake scientists from Lake Tahoe to exchange research and advise the management of the Asian clam infestation in Lake George, NY. The scientists talked about Lake Tahoe's ecology, history of invasive species, and Asian clam infestation and control efforts as a part of the Semester of Study Program at Rensselaer.

Dr. Marion Wittmann from the Tahoe Environmental Research Center at the University of California Davis, CA, presented "Asian clam (*Corbicula fluminea*) in Lake Tahoe: The ecology and management of an invasive bivalve". Dr. Wittmann noted that in Lake Tahoe Asian clam were first discovered in 2002 but management action was not taken until 2008 when algal blooms began to appear in and around their dense beds.

Dr. Sudeep Chandra, Natural Resources and Environmental Sciences from the University of Nevada, Reno, NV delivered a presentation on "Ecological changes in Tahoe over time: influences of cultural eutrophication and invasive species".

Chandra and Wittmann have been involved in the active management and study of Asian clam in Lake Tahoe. These two scientists shared their research, spoke with students and other scientists, visited the Asian clam infestation sites in Lake George, and met with the Asian Clam Rapid Response Task Force. They both agree that the early detection of Asian clam in Lake George makes eradication of the species a possibility. "If steps are taken to control Asian clam now it is likely they could be eradicated from Lake George", said Dr. Chandra.

The Asian Clam Rapid Response Task Force, with guidance from Wittmann and Chandra, has developed a pilot control project to test a number of different types of benthic barrier mats and their effectiveness in smothering the clams. One of the mat types that will be tested in Lake George has been used successfully in Lake Tahoe. The pilot benthic barrier mat study is currently underway at two shallow water sites in Lake George in Lake George Village, NY. Monitoring and evaluation of the locations will inform spring control efforts.

The \$30,000 Asian clam benthic barrier pilot project has been supported by The Nature Conservancy Dome Island Committee of Lake George, Fund for Lake George, Lake George Association, and the National Aquatic Nuisance Species Task Force through the approved Lake Champlain Basin Aquatic Nuisance Species Management Plan. Under the model of the Lake Champlain Basin Aquatic Invasive Species Rapid Response Action Plan, partners from NY and VT, under the leadership of the DFWI, have volunteered staff, resources, and other expertise in a rapid response effort to test the mats for a possible spring treatment.

The pilot project will be completed in December 2010. The results of the pilot project will determine the most effective control method for Asian clam in the spring. The Asian Clam Rapid Response Task Force will work with partners over the winter to secure the funding needed to support control of the Asian clam infestation. "The early detection and cooperation among partners to conduct a rapid response pilot project and control of Asian clam in Lake George, NY significantly increases the likelihood of Asian clam population control and eradication from Lake George", said Meg Modley, Lake Champlain Basin Program. Partners are dedicated to implementing a comprehensive management strategy in spring 2011 before water temperatures warm up high enough to trigger Asian clam reproduction.

Public: For further info contact

Sandra Nierzwicki-Bauer

Darrin Fresh Water Institute, Rensselaer

(518) 644-3541 office

nierzs@rpi.edu<mailto:nierzs@rpi.edu>

Emily Debolt

Lake George Association

(518) 668-3558 ext. 309

edebolt@lakegeorgeassociation.org<mailto:edebolt@lakegeorgeassociation.org>

Meg Modley

Lake Champlain Basin Program

(802) 372-3213

mmodley@lcbp.org<mailto:mmodley@lcbp.org>

Attachments

[cid:image003.jpg@01CB76C2.77392D80]Partners work to lay benthic barrier mats at the Lakeside Ave location on Oct. 9th, 2010

[cid:image004.jpg@01CB76C2.77392D80] [cid:image005.jpg@01CB76C2.77392D80]

Lake Tahoe visiting scientists Dr. Wittmann and Chandra on Lake George September, 2010

Photo Credit: Dr. Sudeep Chandra

Handful of Asian clams from Lake George September, 2010

Photo Credit: Dr. Sudeep Chandra

[cid:image006.jpg@01CB76C2.77392D80]

Asian clams dead after the first 15 days of the benthic barrier mat study in Lake George.

Photo credit: Steve Resler

Meg Modley
Aquatic Invasive Species Management Coordinator
Lake Champlain Basin Program
54 West Shore Rd. Grand Isle, VT 05458
(802) 372-3213
mmodley@lcbp.org<mailto:mmodley@lcbp.org>
