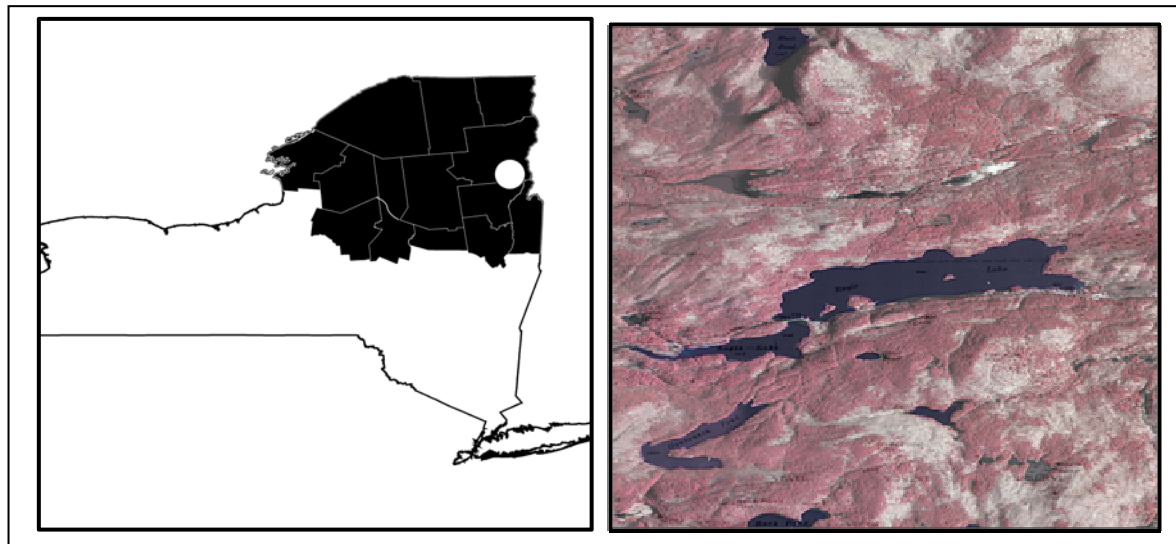


CSLAP 2013 Lake Water Quality Summary: Eagle Lake

General Lake Information

Location	Town of Ticonderoga
County	Essex
Basin	Upper Hudson River
Size	170.9 hectares (422.1 acres)
Lake Origins	Augmented by 6ft by 90ft earth and rockfill dam (1865)
Watershed Area	996.5 hectares (2,461.4 acres)
Retention Time	1.8 years
Mean Depth	5.4 meters
Sounding Depth	11.5 meters
Public Access?	DEC launch
Major Tributaries	Goosneck Pond Outlet
Lake Tributary To...	unnamed outlet to Pagagon Brook to Paradox Lake to Schroom River to Hudson River
WQ Classification	B (contact recreation = swimming)
Lake Outlet Latitude	43.872
Lake Outlet Longitude	-73.617
Sampling Years	2000-2013
2013 Samplers	Dianne and Rolf Tiedemann, Paul and Mary Lloyd Burroughs
Main Contact	Paul and Mary Lloyd Burroughs

Lake Map



Background

Eagle Lake is a 422 acre, class B lake found in the Town of Ticonderoga in Essex County, within the Eastern Adirondack region of New York State. Eagle Lake was first sampled as part of CSLAP in 2000.

It is one of nine CSLAP lakes among the more than 270 lakes found in Essex County, and one of 24 CSLAP lakes among the more than 470 lakes and ponds in the Upper Hudson River drainage basin.

Lake Uses

Eagle Lake is a Class B lake; this means that the best intended use for the lake is for contact recreation—swimming and bathing, non-contact recreation—boating and fishing, aquatic life, and aesthetics. The lake is used by lake residents and visitors (via a DEC launch site) for a variety of recreational purposes.

Eagle Lake is stocked annually with about 3,800 nine inch brown trout, and 1,500 seven inch brown trout. Fish species in the lake include black crappie, brown bullhead, brown trout, largemouth bass, northern pike, pickerel, rock bass, smallmouth bass, pumpkinseed sunfish, lake whitefish, and yellow perch.

General statewide fishing regulations are applicable in Eagle Lake. In addition, the open season on sunfish and yellow perch lasts all year, with no size or take limits. There is also a year-long open season on trout, with no size limits, but a daily take limit of five fish.

Historical Water Quality Data

CSLAP sampling was conducted on Eagle Lake each year from 2000 to 2013. The CSLAP reports for each of the past several years can be found on the NYSFOLA website at <http://nysfola.mylaketown.com>. The most recent CSLAP report and scorecard for Eagle Lake can also be found on the NYSDEC web page at <http://www.dec.ny.gov/lands/77872.html>.

Eagle Lake was sampled by the NYSDEC in 1999 as part of the Lake Classification and Inventory (LCI) survey, the Division of Water ambient lake monitoring program. It was also sampled by the New York State Conservation Department (the predecessor to the NYSDEC) as part of the Biological Survey of the Upper Hudson River basin in 1932. The LCI results from 1999 indicate that water transparency was slightly higher than in the contemporary CSLAP study of the lake, although nutrient and algae levels were comparable. These indicators suggest that water quality conditions from 1999 were similar to those measured in recent years through CSLAP.

The Biological Survey was intended to evaluate water quality conditions as they relate to fisheries management, so much of the information collected cannot be easily compared to the CSLAP dataset. The lake was described as follows:

“Eagle Lake comprises an area of 409 acres with little shallow water and few weed beds. The rocky bottom slopes rapidly away from the shores. Eighty to ninety percent of the lake is over twenty feet deep and temperature and oxygen relationships are satisfactory for fish everywhere..... few weed beds... This is a rather narrow lake with rocky shores. The weed areas

are limited mostly to a long narrow bay which includes the part of the lake west of the highway crossing. This bay gradually merges with Paragon Creek. This whole area, for a distance of over one mile, supports a very luxuriant growth of plants”.

Lake Association and Management History

Eagle Lake is served by the Eagle Lake Property Owners, Inc. Some of the activities conducted by the lake association include:

- Septic system inspection and dye testing (late 1990s)
- On-going education of lake residents (at annual meeting) discouraging feeding of waterfowl
- remove beaver dam and control of own water level
- plant control- plant monitoring, benthic mats, hand harvesting, mapping, grant writing, advocating and applying for aquatic herbicide control, signage to prevent or minimize new infestations
- adopt a highway, neighborhood watch

The Eagle Lake Association maintains a website at <http://www.eaglelake1.org/>.

Summary of 2013 CSLAP Sampling Results

Evaluation of 2013 Annual and Monthly Results Relative to 2006-2012

The summer (mid-June through mid-September) average readings are compared to historical averages for all CSLAP sampling seasons in the “Lake Condition Summary” table, and are compared to individual historical CSLAP sampling seasons in the “Long Term Data Plots –Eagle Lake” section in Appendix C.

Evaluation of Eutrophication Indicators

Water clarity readings were higher than normal in 2013, particularly in late summer, although this did not translate into changes in algae levels or total phosphorus, both of which were close to normal in 2013. None of these indicators has exhibited any clear long-term trends. Lake productivity decreases slightly during the typical summer, as manifested in decreasing nutrient levels and increasing water clarity. These seasonal changes were not apparent in 2013.

The lake continues to be characterized as *oligotrophic*, based on water clarity, chlorophyll *a* and total phosphorus readings. The trophic state indices (TSI) evaluation suggests that each of the trophic indicators are “internally consistent,” with readings for each of the trophic indicators within the expected range. Overall trophic conditions are summarized on the Lake Scorecard and Lake Condition Summary Table.

Evaluation of Potable Water Indicators

Algae levels are not high enough to render the lake susceptible to taste and odor compounds or elevated DBP (disinfection by product) compounds that could affect the potability of the water, and the lake is not classified for this use. Deepwater phosphorus and ammonia readings are low and similar to those measured at the lake surface. This suggests no impacts for any “unofficial” deepwater potable intakes. Potable water conditions, at least as measurable through CSLAP, are summarized in the Lake Scorecard and Lake Condition Summary Table.

Evaluation of Limnological Indicators

NOx readings were higher than normal in 2013, although these readings were still low. Each of the other limnological indicators (ammonia, total nitrogen, pH, conductivity, and color) was close to normal in 2013. None of these indicators has exhibited a long-term trend. It is likely that the small changes in each of these indicators from year to year represent normal variability. Overall limnological conditions are summarized in the Lake Scorecard and Lake Condition Summary Table.

Evaluation of Biological Condition

Phytoplankton, zooplankton and macroinvertebrate data have not been collected through CSLAP at Eagle Lake. The fluoroprobe screening samples analyzed by SUNY ESF in 2012 and 2013 found both low overall algae levels and low blue green algae levels, consistent with the other water quality data. The shoreline bloom sample collected and analyzed in 2013 was comprised primarily of green algae, not blue green algae.

The Darrin Freshwater Institute (DFWI) and Allied Biological macrophyte surveys show very high diversity in the aquatic plant community, and identified 37 different aquatic plant species at the lake, including three protected plant species (*Megalodonta beckii*, water marigold, *Potamogeton alpinus*, northern pondweed, and *Isoetes lacustris*, lake quillwort) are found in the lake and one exotic plant species (*Myriophyllum spicatum*, Eurasian watermilfoil). The modified floristic quality index (FQI) indicates that the quality of the aquatic plant community is “excellent”, although the management of Eurasian watermilfoil continues to be a focus of the lake association.

The fish community is comprised of at least eleven fish species, two of which are coldwater species and three of which are coolwater fish species.

Biological conditions in the lake are summarized in the Lake Scorecard and Lake Condition Summary Table.

Evaluation of Lake Perception

Recreational assessments were slightly less favorable than normal in 2013, due to a slight increase in (reported) plant coverage. These less favorable assessments occurred despite higher than normal water clarity and more favorable water quality assessments. None of these indicators of lake perception has exhibited a long-term trend. Recreational assessments often degrade slightly during the summer, coincident with seasonal increases in aquatic plant coverage. Water quality assessments often improve slightly during the summer; these assessments were consistently (highly) favorable in 2013. Overall lake perception is summarized on the Lake Scorecard and Lake Condition Summary Table.

Evaluation of Local Climate Change

Air and water temperatures were slightly lower than normal during the summer index period (mid June through mid September), but no long-term changes have been apparent in either indirect indicator of local climate change.

Evaluation of Algal Toxins

Algal toxin levels can vary significantly within blooms and from shoreline to lake, and the absence of toxins in a sample does not indicate safe swimming conditions. Phycocyanin readings have been below the levels indicating susceptibility for harmful algal blooms (HABs), consistent with the 2012 and 2013 fluoroprobe screening results indicating low levels of blue green algae in the open water and shoreline bloom samples. Microcystis readings have been well below the levels indicating impacts to safe swimming in the open water and in the 2013 shoreline bloom.

Lake Condition Summary

Category	Indicator	Min	00-13 Avg	Max	2013 Avg	Classification	2012 Change?	Long-term Change?
Eutrophication Indicators	Water Clarity	4.50	6.37	9.45	7.21	Oligotrophic	Higher Than Normal	No Change
	Chlorophyll <i>a</i>	0.10	1.06	8.20	1.09	Oligotrophic	Within Normal Range	No Change
	Total Phosphorus	0.002	0.006	0.023	0.007	Oligotrophic	Within Normal Range	No Change
Potable Water Indicators	Hypolimnetic Ammonia	0.00	0.04	0.38	0.02	Close to Surface NH4 Readings	Lower Than Normal	Not known
	Hypolimnetic Arsenic							Not known
	Hypolimnetic Iron							Not known
	Hypolimnetic Manganese							Not known
Limnological Indicators	Hypolimnetic Phosphorus	0.002	0.006	0.015	0.007	Close to Surface TP Readings	Within Normal Range	Not known
	Nitrate + Nitrite	0.00	0.02	0.24	0.03	Low NOx	Higher than Normal	No Change
	Ammonia	0.00	0.05	0.50	0.02	Low Ammonia	Within Normal Range	No Change
	Total Nitrogen	0.09	0.36	1.13	0.32	Low Total Nitrogen	Within Normal Range	No Change
	pH	6.29	7.66	8.85	7.59	Alkaline	Within Normal Range	No Change
	Specific Conductance	88	140	203	150	Intermediate Hardness	Within Normal Range	No Change
	True Color	1	9	46	10	Uncolored	Within Normal Range	No Change
	Calcium	8.8	12.0	13.9		May be Susceptible to Zebra Mussels		No Change
Lake Perception	WQ Assessment	1	2.0	3	1.0	Not Quite Crystal Clear	More Favorable Than Normal	No Change
	Aquatic Plant Coverage	1	2.9	4	3.4	Surface Plant Growth	Less Favorable than Normal	No Change
	Recreational Assessment	2	3.1	4	3.6	Slightly Impaired	Less Favorable than Normal	No Change
Biological Condition	Phytoplankton					Open water-low blue green algae biomass; Shoreline-low blue green algae in bloom	Not known	Not known
	Macrophytes					Excellent quality of aquatic plant community	Not known	Not known
	Zooplankton					Not measured through CSLAP	Not known	Not known
	Macroinvertebrates					Not yet evaluated	Not known	Not known
	Fish					Warmwater fisheries	Not known	Not known
	Invasive Species					Brown trout, Eurasian watermilfoil	Not known	Not known
Local Climate Change	Air Temperature	8	22.6	32	17.0		Lower Than Normal	No Change
	Water Temperature	14	21.7	28	20.1		Lower Than Normal	No Change

Category	Indicator	Min	00-13 Avg	Max	2013 Avg	Classification	2013 Change?	Long-term Change?
Harmful Algal Blooms	Open Water Phycocyanin	-1	5	44	2	No readings indicate high risk of BGA	Not known	Not known
	Open Water FP Chl.a	0	1	4	1	No readings indicate high algae levels	Not known	Not known
	Open Water FP BG Chl.a	0	0	2	0	No readings indicate high BGA levels	Not known	Not known
	Open Water Microcystis	0.4	0.2	0.9	0.2	Mostly undetectable open water MC-LR	Not known	Not known
	Open Water Anatoxin a	<DL	<DL	<DL	<DL	Open water Anatoxin-a consistently not detectable	Not known	Not known
	Shoreline Phycocyanin					No shoreline blooms sampled for PC	Not known	Not known
	Shoreline FP Chl.a	19	19	19	19	Some readings indicate high algae levels	Not known	Not known
	Shoreline FP BG Chl.a	0	0	0	0	No readings indicate high BGA levels	Not known	Not known
	Shoreline Microcystis	<DL	<DL	<DL	<0.30	No shoreline bloom MC-LR data	Not known	Not known
	Shoreline Anatoxin a	<DL	<DL	<DL	<DL	No shoreline bloom anatoxin data	Not known	Not known

Evaluation of Lake Condition Impacts to Lake Uses

Eagle Lake is presently among the lakes listed on the 2007 Upper Hudson River basin Priority Waterbody List (PWL), with recreation listed as *stressed* due to excessive weeds. The PWL listing for the lake is in Appendix C.

Potable Water (Drinking Water)

The CSLAP dataset at Eagle Lake, including water chemistry data, physical measurements, and volunteer samplers' perception data, is inadequate to evaluate the use of the lake for potable water, and the lake is not classified for this use. The limited CSLAP data suggest no impacts for any "unofficial" use of the lake for this purpose, although this use is not authorized.

Contact Recreation (Swimming)

The CSLAP dataset at Eagle Lake, including water chemistry data, physical measurements, and volunteer samplers' perception data, suggests that swimming and contact recreation should be fully supported as related to water quality conditions, but may be *threatened* by excessive weeds. Additional information about bacteria levels is needed to determine if pathogens impact swimming.

Non-Contact Recreation (Boating and Fishing)

The CSLAP dataset on Eagle Lake, including water chemistry data, physical measurements, and volunteer samplers' perception data, suggest that non-contact recreation may be *stressed* by excessive weeds, particularly Eurasian watermilfoil.

Aquatic Life

The CSLAP dataset on Eagle Lake, including water chemistry data and physical measurements, suggest that aquatic life could be *threatened* by invasive plants and animals. Additional data are needed to evaluate the food and habitat conditions for aquatic organisms in the lake.

Aesthetics

The CSLAP dataset on Eagle Lake, including volunteer samplers' perception data, suggest that aesthetics should be fully supported.

Fish Consumption

Fish consumption advisories are not posted for Eagle Lake.

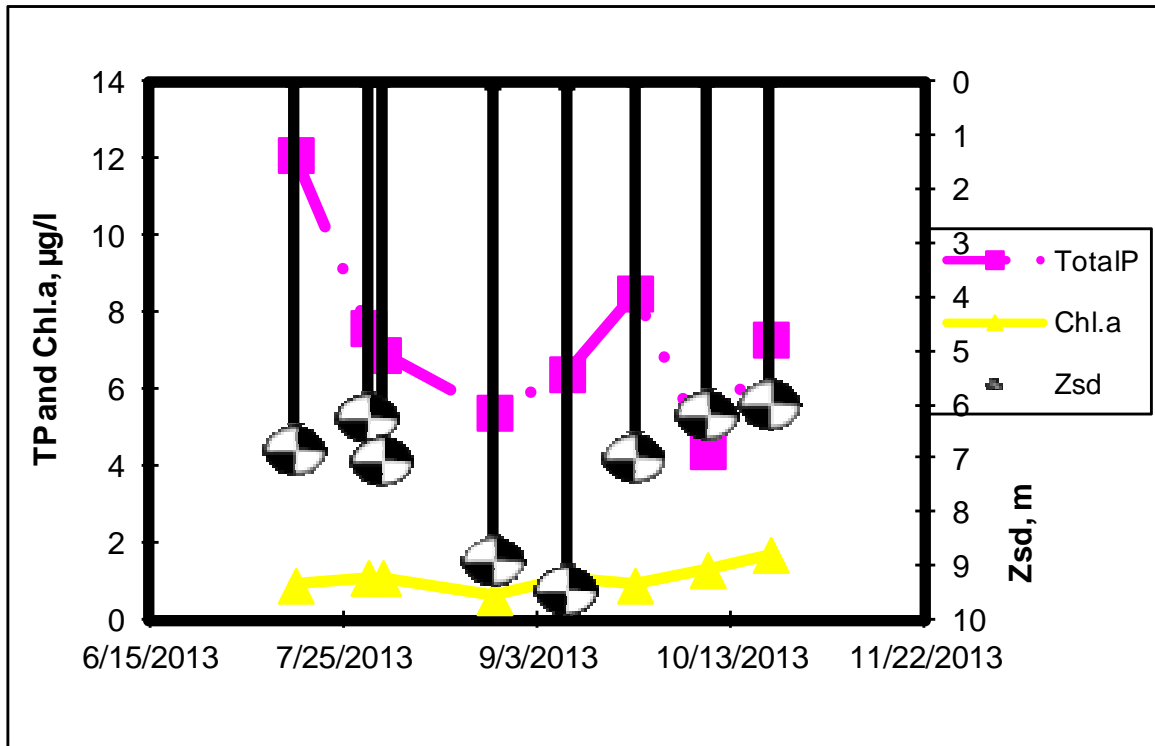
Additional Comments and Recommendations

Additional (more extensive) water quality evaluations may be conducted with the CSLAP dataset in the event of an herbicide treatment in the lake, to assure that no water quality impacts occur (or are attributable to the rapid milfoil dieoff anticipated as a result of a treatment). Lake residents are advised to report any shoreline algae blooms.

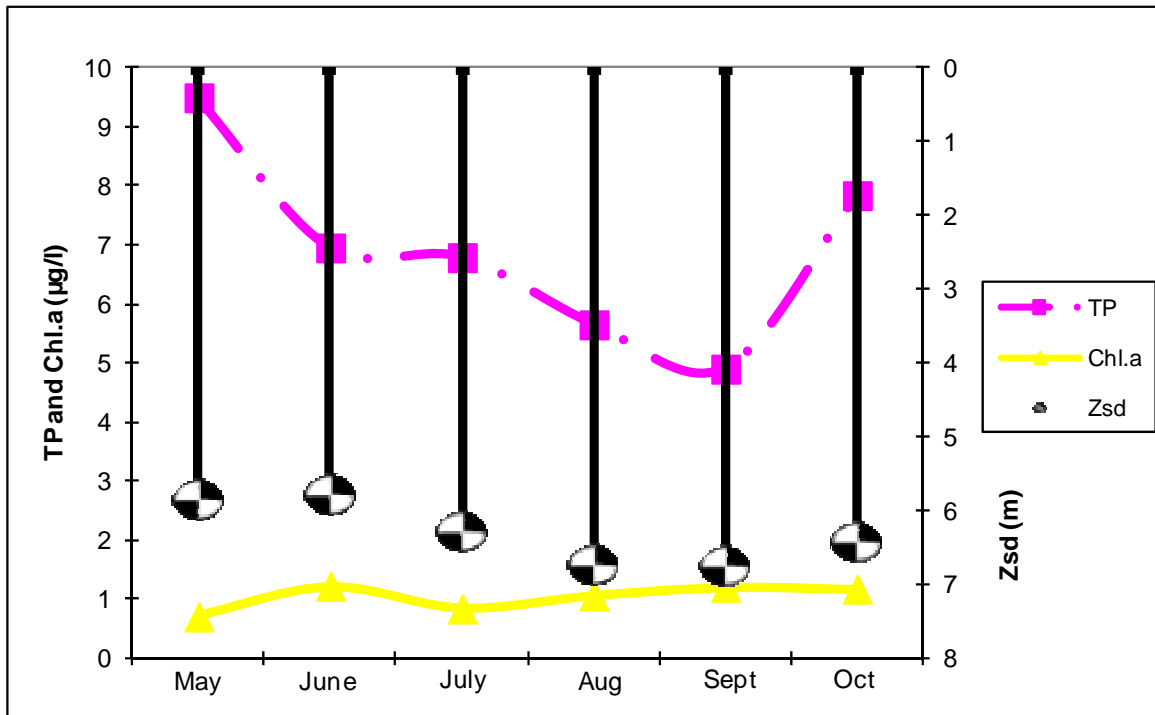
Aquatic Plant IDs-2013

None submitted for identification in 2013.

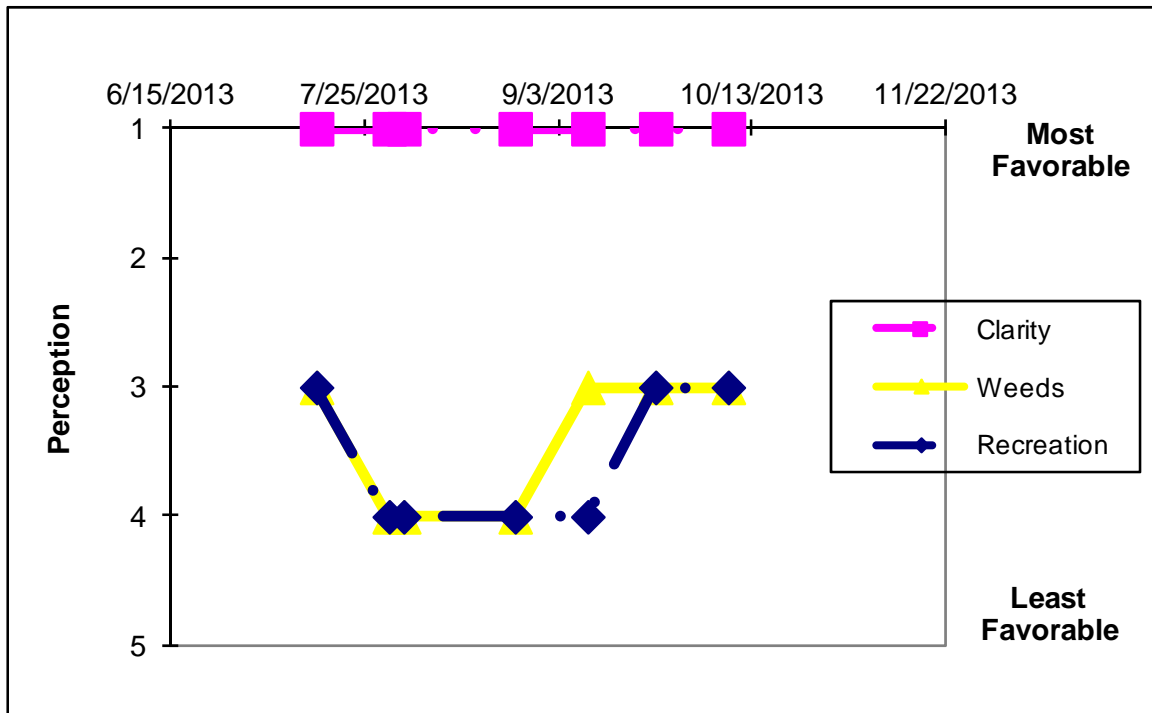
Time Series: Trophic Indicators, 2013



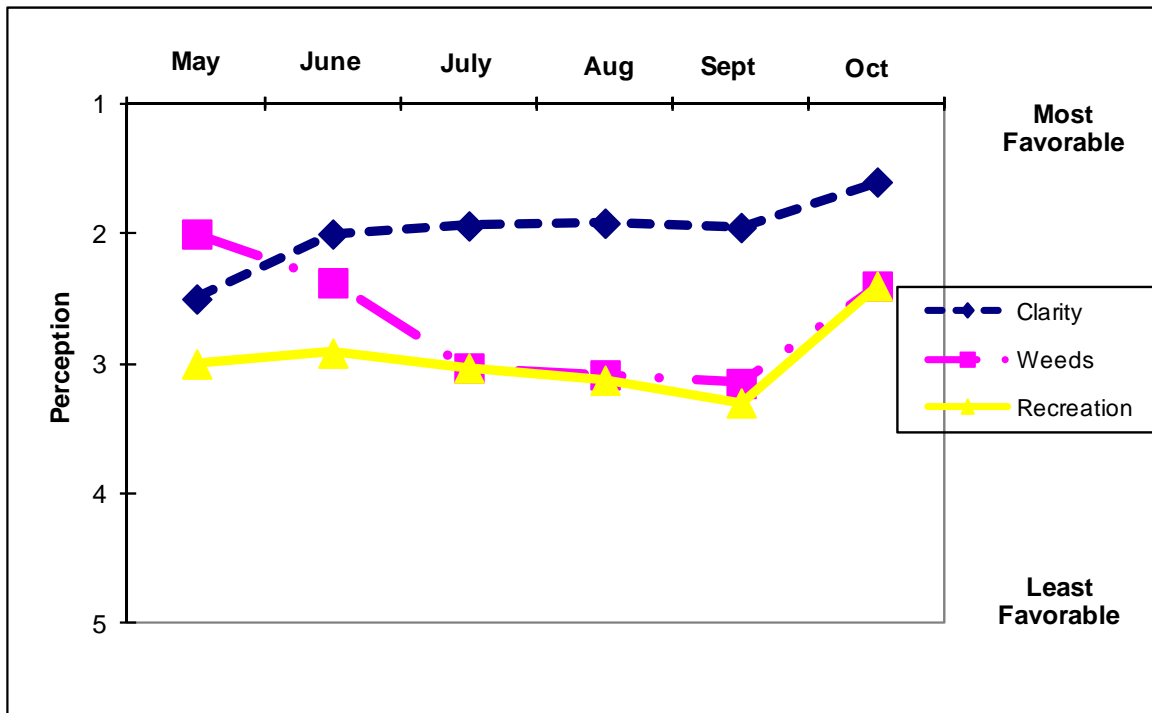
Time Series: Trophic Indicators, Typical Year (2000-2013)



Time Series: Lake Perception Indicators, 2013



Time Series: Lake Perception Indicators, Typical Year (2000-2013)



Appendix A- CSLAP Water Quality Sampling Results for Eagle Lake

LNum	PName	Date	Zbot	Zsd	Zsamp	Tot.P	NO3	NH4	TDN	TN/TP	TColor	pH	Cond25	Ca	Chl.a
169	Eagle L	5/30/2000	11.8	5.00	1.5	0.010	0.01				8	7.87	133		1.79
169	Eagle L	6/12/2000	12.4	5.55	1.5	0.006	0.01				7	7.57	129		8.20
169	Eagle L	6/26/2000	11.5	7.95	1.5	0.010	0.01				8	7.94	137		0.56
169	Eagle L	7/10/2000	11.6	5.95	1.5	0.004	0.01				3	7.49	139		1.08
169	Eagle L	7/24/2000	11.5	7.00	1.5	0.004	0.01				7	7.47	136		1.15
169	Eagle L	8/7/2000	11.5	7.40	1.5	0.005	0.01				4	6.82	137		2.08
169	Eagle L	8/22/2000	11.7	7.00	1.5	0.008	0.01				3	8.15	134		0.42
169	Eagle L	9/4/2000	11.5	6.25	1.5	0.006	0.01				6	6.75	138		1.41
169	Eagle L	7/8/2001	11.5	7.00	1.5	0.006	0.01				3	7.91	136		1.51
169	Eagle L	7/22/2001	11.5	7.25	1.5	0.005	0.01				4	7.94	138		0.77
169	Eagle L	8/5/2001	11.5	7.35	1.5	0.005	0.01				3	7.19	117		0.99
169	Eagle L	9/3/2001	11.5	6.95	1.5	0.006	0.01				4	7.64	139		
169	Eagle L	9/30/2001	11.5	7.60	1.5	0.004	0.01				6	6.80	142		
169	Eagle L	10/10/2001	11.5	7.35	1.5	0.012	0.01				5	7.57	145		
169	Eagle L	10/23/2001	11.5	7.20	1.5	0.007	0.01				8	7.31	153		0.78
169	Eagle L	06/10/02	11.5	5.50	1.5	0.009	0.01	0.02	0.56	64.65	9	7.04	142		1.04
169	Eagle L	06/23/02	11.5	6.50	1.5	0.009	0.00	0.03	0.40	46.00	2	7.70	140		
169	Eagle L	07/07/02	11.5	5.90	1.5	0.007	0.00	0.02	0.38	52.77	11	7.93	141		1.23
169	Eagle L	07/19/02	11.5	6.10	1.5	0.007	0.00	0.05	0.54	76.15	16	6.71	147		0.75
169	Eagle L	07/21/02	11.5	6.95	1.5	0.006	0.00	0.03	0.37	66.32	8	7.63	143		
169	Eagle L	08/04/02	11.5	6.30	1.5	0.006	0.00	0.04	0.74	128.35	6	7.95	144		0.99
169	Eagle L	09/01/02	11.5	7.05	1.5	0.007	0.00	0.04	0.55	83.09	2	7.74	141		1.11
169	Eagle L	09/21/02	11.5	6.85	1.5	0.002	0.00	0.01	0.33	172.97	5	7.94	142		1.04
169	Eagle L	6/9/2003	11.5	5.10	1.5	0.005	0.00	0.01	0.36	70.59	7	7.72	147	12.0	1.47
169	Eagle L	6/24/2003	11.5	5.60	1.5	0.008	0.01	0.00	0.32	39.70	5	7.70	148		0.71
169	Eagle L	6/29/2003	11.5	5.10	1.5	0.005	0.01	0.00	0.35	69.03	11	6.74	153		0.92
169	Eagle L	7/13/2003	11.5	6.50	1.5		0.01	0.02	0.23	9.98	9	6.33	157		1.22
169	Eagle L	7/27/2003	11.5	4.75	1.5	0.008	0.00	0.01	0.11	13.12				13.0	0.56
169	Eagle L	8/10/2003	11.5	8.20	1.5	0.005	0.02	0.00	0.41	75.85	9	7.62	149		0.81
169	Eagle L	8/24/2003	11.5	6.35	1.5	0.008	0.00	0.00	0.13	16.23	15	7.60	146		0.44
169	Eagle L	9/8/2003	11.5	7.10		0.002	0.00	0.00	0.32	133.67	2	7.43	147		0.87
169	Eagle L	6/12/2004	11.5	6.80	1.5	0.007	0.01	0.01			9	6.31	120		0.16
169	Eagle L	6/26/2004	11.5	5.60	1.5	0.005	0.03	0.01	0.15	29.44	19	6.69	161		
169	Eagle L	7/10/2004	11.5	6.80	1.5		0.03	0.01	0.32		4	6.94	140		0.20
169	Eagle L	7/24/2004	11.5	6.45	1.5	0.013	0.01	0.01	0.21	15.95	16	8.04	117		1.20
169	Eagle L	8/9/2004	11.5	6.35	1.5	0.004	0.01	0.02	0.19	52.62	15	7.78	157	11.8	1.30
169	Eagle L	8/24/2004	11.5	6.50	1.5	0.003	0.02	0.01	0.29	102.47	17	7.89	168		1.30
169	Eagle L	9/6/2004	11.5	5.60	1.5	0.004	0.01	0.01	0.26	68.24	8	7.88	121		2.50
169	Eagle L	9/18/2004	11.5	5.75	1.5	0.004	0.01	0.01	0.57	135.61	9	7.22	115		0.93
169	Eagle L	6/28/2005	11.5	4.70	1.5	0.008	0.01	0.01	0.15	17.33	11	8.80	147	12.3	0.82
169	Eagle L	7/11/2005	11.5	4.50	1.5	0.005	0.02	0.04	0.24	50.44	9	7.50	134		
169	Eagle L	7/25/2005	11.5	6.20	1.5	0.004	0.03	0.01	0.16	37.53	7	7.59	133		1.11
169	Eagle L	8/7/2005	11.5	7.10	1.5	0.004	0.01	0.01	0.26	64.05	9	8.28	144		0.70
169	Eagle L	8/22/2005	11.5	5.75	1.5	0.005	0.01	0.01	0.11	23.69	46	7.78	138	11.8	0.87
169	Eagle L	9/4/2005	11.5	7.35	1.5	0.004	0.01	0.01	0.61	140.48	6	8.35	129		0.99
169	Eagle L	9/19/2005	11.5	6.25	1.5	0.004	0.01	0.01	0.10	23.88	10	7.63	147		1.08
169	Eagle L	10/1/2005	11.5	5.50	1.5	0.010	0.01	0.01	0.12	12.30	6	7.30	131		0.97
169	Eagle L	6/6/2006	11.5	5.45	1.5	0.006	0.03	0.01	0.44	170.30	13		115	11.0	1.17
169	Eagle L	6/18/2006	11.5	6.25	1.5	0.005	0.02	0.02	0.36	168.10	12	7.88	117		0.87
169	Eagle L	7/2/2006	11.5	4.95	1.5	0.007	0.01	0.01	0.59	188.65	10	8.33	145		0.54
169	Eagle L	7/16/2006	11.5	6.65	1.5	0.006	0.01	0.02	0.61	238.14	4	7.56	128		0.64
169	Eagle L	7/30/2006	11.5	6.25	1.5	0.009	0.02	0.02	0.46	115.55	10	8.02	143	12.3	0.35
169	Eagle L	8/13/2006	11.5	6.35	1.5	0.003	0.01	0.02	0.55	366.93	14	7.58	131		0.76
169	Eagle L	8/27/2006	11.5	6.50	1.5	0.006	0.03	0.04	0.60	240.05	2	7.35	131		1.94
169	Eagle L	9/11/2006	11.5	7.55	1.5	0.003	0.03	0.02	0.59	390.71	2	7.44	123		1.00
169	Eagle L	6/23/2007	11.5	5.10	1.5	0.006	0.02	0.04	0.49	171.7	9	7.3	111	9.9	0.79
169	Eagle L	7/6/2007	11.5	5.35	1.5	0.006	0.01	0.02	1.13	439.9	10	7.3	151		1.21
169	Eagle L	7/19/2007	11.5	6.35	1.5	0.006	0.01	0.01	0.44	158.7	12	8.2	112		0.51
169	Eagle L	7/29/2007	11.5	5.80	1.5	0.005	0.02	0.01	0.49	199.8	13	8.1	130		0.61
169	Eagle L	8/15/2007	11.5	5.40	1.5	0.006	0.01	0.06	0.48	187.9	7	7.6	102	12.4	0.85
169	Eagle L	8/28/2007	11.5	6.45	1.5	0.004	0.12	0.03	0.54	272.8	7	8.2	137		0.41
169	Eagle L	9/10/2007	11.5	6.45	1.5	0.005	0.00	0.12	0.76	309.9	10	8.5	135		1.91
169	Eagle L	9/23/2007	11.5	6.65	1.5	0.005	0.01	0.02	0.51	226.1	8	7.9	142		0.83

LNum	PName	Date	Zbot	Zsd	Zsamp	Tot.P	NO3	NH4	TDN	TN/TP	TColor	pH	Cond25	Ca	Chl.a
169	Eagle L	6/12/2008	11.5	5.80	1.5	0.005	0.01	0.02	0.21	104.28	5	7.42	191	12.1	0.10
169	Eagle L	6/26/2008	11.5	6.00	1.5	0.007	0.04	0.03	0.29	97.78	6	8.10	140		0.10
169	Eagle L	7/11/2008	11.5	6.00	1.5	0.003	0.01	0.01	0.23	152.62	10	8.29	120		0.10
169	Eagle L	7/25/2008	11.5	6.15	1.5	0.004	0.01	0.03	0.21	127.22	10	8.11	129		0.10
169	Eagle L	8/7/2008	11.5	6.10	1.5	0.004	0.01	0.02	0.17	87.51	6	8.22	150	11.6	0.29
169	Eagle L	8/22/2008	11.5	7.10	1.5	0.004	0.00	0.01	0.16	95.34	9	8.19	126		
169	Eagle L	9/4/2008	11.5	6.25	1.5	0.003	0.00	0.01	0.18	152.49	5	6.76	144		0.81
169	Eagle L	9/18/2008	11.5	6.20	1.5	0.002	0.02	0.03	0.26	289.18	6	7.38	100		0.68
169	Eagle L	06/12/2009	11.5	5.75	1.5	0.006	0.03	0.27	0.46	161.87	9			12.6	2.03
169	Eagle L	06/26/2009	11.5	6.35	1.5	0.009	0.01	0.16	0.40	98.51	10	7.54	143		0.39
169	Eagle L	07/10/2009	11.5	6.50	1.5	0.005	0.02	0.43	0.40	184.25	13	6.29	131		0.64
169	Eagle L	07/24/2009	11.5	5.90	1.5	0.006	0.06	0.50	0.89	311.14	22	7.69	88		0.70
169	Eagle L	07/30/2009	11.5	7.25	1.5	0.005	0.01	0.14	0.30	130.68	8	7.60	107	13.9	0.70
169	Eagle L	08/20/2009	11.5	6.25	1.5	0.006	0.02	0.29	0.52	188.62	14	8.23	112		1.00
169	Eagle L	09/04/2009	11.5	6.25	1.5	0.005		0.22	0.43	208.27	14	7.14	126		0.40
169	Eagle L	09/16/2009	11.5	6.50	1.5	0.005	0.01	0.29	0.52	215.43	12	7.38	117		1.10
169	Eagle L	5/26/2010	11.5	6.70	1.5	0.009	0.02	0.05			6	7.99	203	12.9	0.70
169	Eagle L	6/9/2010	11.5	6.65	1.5	0.007	0.09	0.07			3	8.56	161		0.10
169	Eagle L	6/23/2010	11.5	6.65	1.5	0.006	0.05	0.07	0.30	110.37	1	7.39	160		0.90
169	Eagle L	7/6/2010	11.5	7.05	1.5	0.005	0.01	0.01	0.20	87.12	7	8.08	163		1.00
169	Eagle L	7/19/2010	11.5	7.20	1.5	0.004	0.02	0.02	0.26	140.05	9	8.22	163	13.3	0.90
169	Eagle L	8/3/2010	11.5	7.30	1.5	0.007	0.01	0.03	0.47	146.25	6	8.30	151		0.70
169	Eagle L	8/17/2010		6.40	1.5	0.004	0.03	0.09	0.21	113.85	5	8.05	155		0.90
169	Eagle L	8/31/2010	11.5	6.20	1.5	0.004	0.02	0.04	0.27	142.73	5	7.88	162		0.90
169	Eagle L	6/3/2011	11.5	5.10	1.5	0.007	0.04	0.04	0.22	72.00	10	7.63	151	11.9	1.00
169	Eagle L	6/17/2011	11.5	4.65	1.5	0.007	0.01	0.03	0.09	29.65	13	6.43	187		1.50
169	Eagle L	7/1/2011	11.5	5.05	1.5	0.006	0.01	0.02	0.25	91.25	8	8.85	156		1.40
169	Eagle L	7/15/2011	11.5	6.50	1.5	0.006	0.01	0.02	0.17	61.67	13	7.73	158		0.90
169	Eagle L	7/29/2011	11.5	6.55	1.5	0.005	0.01	0.03	0.19	85.71	10	8.31	136	12.9	1.00
169	Eagle L	8/12/2011	11.5	7.20	1.5	0.005	0.01	0.01	0.43	194.41	8	8.27	154		1.10
169	Eagle L	8/26/2011	11.5	6.35	1.5	0.006	0.03	0.03	0.26	91.90	6	8.35	161		3.70
169	Eagle L	9/12/2011	11.5	5.95	1.5	0.004	0.04	0.03	0.20	102.33	12	7.61	140		2.50
169	Eagle L	6/1/2012	11.5	5.00	1.5	0.007	0.01	0.01	0.29	92.14	10	7.41	135	8.8	1.10
169	Eagle L	6/15/2012	11.5	5.70	1.5	0.007	0.01	0.03	0.27	81.07	9	7.21	147		1.50
169	Eagle L	6/30/2012	11.5	6.00	1.5	0.012	0.01	0.01	0.25	48.40	8	8.26	135		1.40
169	Eagle L	7/13/2012	11.5	7.20	1.5	0.023	0.01	0.04	0.16	15.50	9	7.89	145		
169	Eagle L	7/28/2012	11.5	6.25	1.5	0.010	0.01	0.02	0.42	93.28	7	7.63	146	11.8	1.00
169	Eagle L	8/10/2012	11.5	6.40	1.5	0.012	0.01	0.02			7	7.52	139		1.20
169	Eagle L	8/25/2012	11.5	6.95	1.5	0.012	0.01	0.02	0.37	70.40	7	7.51	144		1.10
169	Eagle L	9/7/2012	11.5	6.80	1.5	0.009	0.01	0.03	0.21	50.15	5	7.60	144		1.70
169	Eagle L	7/15/2013	11.7	6.85	1.5	0.012	0.10	0.03	0.25	45.45	12	7.46	146		0.90
169	Eagle L	7/30/2013	11.6	6.25	1.5	0.008			0.38	110.00	14	7.88	148		1.10
169	Eagle L	7/30/2013			bloom										
169	Eagle L	8/2/2013	11.5	7.05	1.5	0.007	0.02	0.03	0.16	52.29	10	7.97	149		1.10
169	Eagle L	8/25/2013	11.5	8.90	1.5	0.005			0.40	164.58	8	7.86	151		0.60
169	Eagle L	9/9/2013	11.5	9.45	1.5	0.006	0.01	0.01	0.31	104.97	9	7.34	146		1.10
169	Eagle L	9/23/2013		7.00	1.5	0.009			0.33	84.89	8	7.62	151		0.90
169	Eagle L	10/8/2013	11.5	6.20	1.5	0.004	0.01	0.01	0.34	170.82	8	7.57	153		1.30
169	Eagle L	10/21/2013	11.5	6.00	1.5	0.007			0.41	123.30	9	7.05	153		1.70
169	Eagle L	06/10/02	11.5			0.009	0.01	0.03	0.58	67.04					
169	Eagle L	06/23/02	11.5			0.009	0.00	0.01	0.31	34.03					
169	Eagle L	07/07/02	11.5			0.007	0.00	0.01	0.45	68.53					
169	Eagle L	07/19/02	11.5			0.004	0.00	0.03	0.51	121.37					
169	Eagle L	07/21/02	11.5			0.007	0.00	0.01	0.34	48.04					
169	Eagle L	08/04/02	11.5			0.006	0.00	0.04	0.51	83.32					
169	Eagle L	09/01/02	11.5			0.013	0.00	0.02	0.44	34.96					
169	Eagle L	09/21/02	11.5			0.002	0.00	0.01	0.33	214.16					
169	Eagle L	6/9/2003				0.011	0.00	0.01	0.18	15.80					
169	Eagle L	6/24/2003				0.006	0.01	0.02	0.29	50.61					
169	Eagle L	6/29/2003				0.005	0.01	0.01	0.30	63.42					
169	Eagle L	7/13/2003				0.008	0.00	0.02	0.34	40.48					
169	Eagle L	7/27/2003				0.013	0.00	0.00	0.03	1.87					
169	Eagle L	8/10/2003				0.006	0.02	0.02							
169	Eagle L	8/24/2003				0.004	0.00	0.00	0.29	71.68					
169	Eagle L	9/8/2003			1.5	0.003	0.00	0.00	0.38	124.40					
169	Eagle L	6/12/2004	11.5			0.006	0.01	0.01							

LNum	PName	Date	Zbot	Zsd	Zsamp	Tot.P	NO3	NH4	TDN	TN/TP	TColor	pH	Cond25	Ca	Chl.a
169	Eagle L	6/26/2004	11.5			0.009	0.01	0.01	0.20	21.80					
169	Eagle L	7/10/2004	11.5			0.006	0.02	0.01	0.38	67.34					
169	Eagle L	7/24/2004	11.5			0.004	0.01	0.01	0.27	61.95					
169	Eagle L	8/9/2004	11.5			0.007	0.01	0.01	0.21	31.95					
169	Eagle L	8/24/2004	11.5			0.003	0.02	0.09	1.05	328.55					
169	Eagle L	9/6/2004	11.5			0.004	0.01	0.01	0.25	65.60					
169	Eagle L	9/18/2004	11.5			0.004	0.01	0.01	0.40	96.28					
169	Eagle L	6/28/2005	11.5			0.007									
169	Eagle L	7/11/2005	11.5			0.005									
169	Eagle L	7/25/2005	11.5			0.010									
169	Eagle L	8/22/2005	11.5			0.006									
169	Eagle L	9/4/2005	11.5			0.005									
169	Eagle L	9/19/2005	11.5			0.006									
169	Eagle L	10/1/2005	11.5			0.008									
169	Eagle L	6/6/2006	11.5			0.007									
169	Eagle L	6/18/2006	11.5			0.008									
169	Eagle L	7/2/2006	11.5			0.006									
169	Eagle L	7/16/2006	11.5			0.007									
169	Eagle L	7/30/2006	11.5			0.006									
169	Eagle L	8/13/2006	11.5			0.005									
169	Eagle L	8/27/2006	11.5			0.005									
169	Eagle L	9/11/2006	11.5			0.006									
169	Eagle L	6/23/2007	11.5			0.005									
169	Eagle L	7/6/2007	11.5			0.005									
169	Eagle L	7/19/2007	11.5			0.004									
169	Eagle L	7/29/2007	11.5			0.006									
169	Eagle L	8/15/2007	11.5			0.005									
169	Eagle L	8/28/2007	11.5			0.004									
169	Eagle L	9/10/2007	11.5			0.005									
169	Eagle L	9/23/2007	11.5			0.005									
169	Eagle L	6/12/2008				0.006									
169	Eagle L	6/26/2008				0.004									
169	Eagle L	7/11/2008				0.005									
169	Eagle L	7/25/2008				0.004									
169	Eagle L	8/7/2008				0.004									
169	Eagle L	8/22/2008				0.007									
169	Eagle L	9/4/2008				0.003									
169	Eagle L	9/18/2008				0.005									
169	Eagle L	06/12/2009	11.5			0.007		0.32							
169	Eagle L	06/26/2009	11.5			0.008									
169	Eagle L	07/10/2009	11.5			0.006		0.38							
169	Eagle L	07/24/2009	11.5			0.007									
169	Eagle L	07/30/2009	11.5			0.006		0.08							
169	Eagle L	08/20/2009	11.5			0.004									
169	Eagle L	09/04/2009	11.5			0.005		0.08							
169	Eagle L	09/16/2009	11.5			0.006									
169	Eagle L	5/26/2010	11.5			0.007		0.03							
169	Eagle L	6/23/2010	11.5			0.005		0.02							
169	Eagle L	7/19/2010	11.5			0.006		0.01							
169	Eagle L	8/17/2010				0.004		0.01							
169	Eagle L	6/3/2011				0.007		0.03							
169	Eagle L	7/1/2011				0.008		0.02							
169	Eagle L	7/29/2011				0.007		0.02							
169	Eagle L	8/26/2011				0.009		0.03							
169	Eagle L	6/1/2012				0.008		0.02							
169	Eagle L	6/30/2012				0.015		0.01							
169	Eagle L	7/28/2012				0.010		0.02							
169	Eagle L	8/25/2012				0.010		0.02							
169	Eagle L	7/15/2013			10.5	0.007		0.03							
169	Eagle L	8/2/2013			10.0	0.006		0.02							
169	Eagle L	9/9/2013			10.0	0.012		0.01							
169	Eagle L	10/8/2013			10.0	0.005		0.01							

LNum	PName	Date	Zsamp	TAir	TH20	QA	QB	QC	QD	QF	QG	AQ-PC	AQ-Chla	MC-LR	Ana-a	Cylin	FP-Chl	FP-BG	HAB-form	Shore HAB
169	Eagle L	5/30/2000	epi	20	15	2	1	3												
169	Eagle L	6/12/2000	epi	17	16	2	2	3	25											
169	Eagle L	6/26/2000	epi	30	24	2	3	3	2											
169	Eagle L	7/10/2000	epi	22	22	2	3	3	56											
169	Eagle L	7/24/2000	epi	25	22	2	3	3	2											
169	Eagle L	8/7/2000	epi	21	23	2	3	3	125											
169	Eagle L	8/22/2000	epi	26	24	2	3	3	2											
169	Eagle L	9/4/2000	epi	11	21	2	3	3	25											
169	Eagle L	7/8/2001	epi	24	21	2	3	3	5											
169	Eagle L	7/22/2001	epi	24	24															
169	Eagle L	8/5/2001	epi	29	25															
169	Eagle L	9/3/2001	epi	27	24	2	3	3	2											
169	Eagle L	9/30/2001	epi	20	18															
169	Eagle L	10/10/2001	epi	11	15															
169	Eagle L	10/23/2001	epi	13	14	2	3	3	5											
169	Eagle L	06/10/02	epi	22	16	2	2	3	2											
169	Eagle L	06/23/02	epi	24	20	2	2	2	5											
169	Eagle L	07/07/02	epi	22	24	2	3	3	2											
169	Eagle L	07/19/02	epi	21	25	2	3	3	2											
169	Eagle L	07/21/02	epi	29	25	2	3	3	2											
169	Eagle L	08/04/02	epi	26	24	2	3	3	2											
169	Eagle L	09/01/02	epi	20	22	2	3	3	258											
169	Eagle L	09/21/02	epi	25	21	2	3	3	2											
169	Eagle L	6/9/2003	epi	20	16	2	2	3	25											
169	Eagle L	6/24/2003	epi	30	24	2	2	3	2											
169	Eagle L	6/29/2003	epi	25	24	2	3	3	25											
169	Eagle L	7/13/2003	epi	22	24	2	3	3	25											
169	Eagle L	7/27/2003	epi	24	24	2	3	3	25											
169	Eagle L	8/10/2003	epi	22	25															
169	Eagle L	8/24/2003	epi	18	24	2	3	3	2											
169	Eagle L	9/8/2003	epi	19	21	2	3	3	28											
169	Eagle L	6/12/2004	epi	20	20	2	3	3	256											
169	Eagle L	6/26/2004	epi	21	21	2	3	3	25											
169	Eagle L	7/10/2004	epi	23	22	2	3	3	2											
169	Eagle L	7/24/2004	epi	22	23	2	3	3	25											
169	Eagle L	8/9/2004	epi	20	22	2	3	3	2											
169	Eagle L	8/24/2004	epi	21	22	2	3	3	2											
169	Eagle L	9/6/2004	epi	21	22	2	3	3	125											
169	Eagle L	9/18/2004	epi	19	20	2	3	3	125											
169	Eagle L	6/28/2005	epi	27	26	2	3	3	125											
169	Eagle L	7/11/2005	epi	29	26	2	3	3	2											
169	Eagle L	7/25/2005	epi	22	26	2	3	3	25											
169	Eagle L	8/7/2005	epi	27	28	2	3	3	2											
169	Eagle L	8/22/2005	epi	20	25	2	3	3	25											
169	Eagle L	9/4/2005	epi	21	21	2	3	3	2											
169	Eagle L	9/19/2005	epi	21	21	2	3	3	2											
169	Eagle L	10/1/2005	epi	19	18	2	3	3	28											
169	Eagle L	6/6/2006	epi	23	20	2	1	2	25											
169	Eagle L	6/18/2006	epi	24	21	2	3	3	25											
169	Eagle L	7/2/2006	epi	23	22	2	3	3	25											
169	Eagle L	7/16/2006	epi	31	26	2	3	3	2											
169	Eagle L	7/30/2006	epi	28	26	2	3	3	2											
169	Eagle L	8/13/2006	epi	22	22	2	3	3	2											
169	Eagle L	8/27/2006	epi	16	20	2	3	4	24568											
169	Eagle L	9/11/2006	epi	16	19	2	3	3	2											
169	Eagle L	6/23/2007	epi	22	21	2	2	3	25											
169	Eagle L	7/6/2007	epi	24	22	2	3	3	25											
169	Eagle L	7/19/2007	epi	24	22	2	3	3	2											
169	Eagle L	7/29/2007	epi	32	27	2	3	3	2											
169	Eagle L	8/15/2007	epi	26	25	2	3	3	2											
169	Eagle L	8/28/2007	epi	22	22	2	3	3	2											

LNum	PName	Date	Zsamp	TAir	TH20	QA	QB	QC	QD	QF	QG	AQ-PC	AQ-Chla	MC-LR	Ana-a	Cylin	FP-Chl	FP-BG	HAB-form	Shore HAB
169	Eagle L	9/10/2007	epi	22	22	2	3	3	2											
169	Eagle L	9/23/2007	epi	20	19	2	3	4	2											
169	Eagle L	6/12/2008	epi	26	22	2	3	3	2											
169	Eagle L	6/26/2008	epi	22	21	2	3	3	2											
169	Eagle L	7/11/2008	epi	21	23	2	3	3	2											
169	Eagle L	7/25/2008	epi	23	22	2	3	3	2											
169	Eagle L	8/7/2008	epi	22	24	2	3	3	2											
169	Eagle L	8/22/2008	epi	26	21	2	3	3	2											
169	Eagle L	9/4/2008	epi	27	23	2	3	4	2											
169	Eagle L	9/18/2008	epi	15	20	2	3	3	2											
169	Eagle L	06/12/2009	epi	23	20	2	2	3	256											
169	Eagle L	06/26/2009	epi	30	23	2	3	3	2											
169	Eagle L	07/10/2009	epi	27	21	2	3	3	2											
169	Eagle L	07/24/2009	epi	23	22	2	3	3	2											
169	Eagle L	07/30/2009	epi	24	22	2	3	3	2											
169	Eagle L	08/20/2009	epi	25	22	2	3	3	2											
169	Eagle L	09/04/2009	epi	24	22	3	4	4	2			12.33								
169	Eagle L	09/16/2009	epi	20	20	2	4	4	2			44.26								
169	Eagle L	5/26/2010	epi	29	18	3	3	3	2	0	0	15.14								
169	Eagle L	6/9/2010	epi	20	21	2	2	3	2	0	0									
169	Eagle L	6/23/2010	epi	27	21	2	2	3	2	0	0									
169	Eagle L	7/6/2010	epi	31	22	2	3	3	2	0	0									
169	Eagle L	7/19/2010	epi	27	26	2	3	3	2	0	0									
169	Eagle L	8/3/2010	epi	27	24	2	3	3	2	0	0									
169	Eagle L	8/17/2010	epi	24	23	2	3	3	2	0	0									
169	Eagle L	8/31/2010	epi	27	22	2	3	3	2											
169	Eagle L	6/3/2011	epi	18	17	2	1	3	25	0	0									
169	Eagle L	6/17/2011	epi	22	20	2	2	3	2	0	0		1.40							
169	Eagle L	7/1/2011	epi	22	21	2	3	3	2	0	0	3.50	1.10							
169	Eagle L	7/15/2011	epi	25	22	2	3	3	2	0	0	3.50	1.60						i	
169	Eagle L	7/29/2011	epi	26	22	2	3	3	2	0	0	3.70	1.30	0.92	<0.5	<0.1				
169	Eagle L	8/12/2011	epi	26	22	2	3	3	2	0	0	5.40	5.10	0.97	<0.5	<0.1				
169	Eagle L	8/26/2011	epi	23	22	2	3	3	2	0	0	4.80	1.30	0.15	<0.5	<0.1				
169	Eagle L	9/12/2011	epi	20	20	2	3	3	2	0	0	5.10	0.80							
169	Eagle L	6/1/2012	epi	18	19	2	2	3	25	0	0	-1.00	0.30	<0.30	<0.417		0.00	0.00	I	
169	Eagle L	6/15/2012	epi	26	22	2	3	3	2	0	0	0.10	0.20	<0.30	<0.413		0.78	0.40	I	
169	Eagle L	6/30/2012	epi	23	26	2	3	3	2	0	0	1.20	0.20	<0.30	<0.423		0.49	0.14	F	
169	Eagle L	7/13/2012	epi	26	22	2	3	3	2	0	0	2.60	0.10	<0.30	<0.328		1.30	0.90	I	
169	Eagle L	7/28/2012	epi	26	22	2	3	3	2	0	0	1.90	0.20	<0.30	<0.292		1.85	1.07	I	
169	Eagle L	8/10/2012	epi	27	24	2	3	3	2	0	0	4.20	0.30	<0.30	<0.537		1.48	0.55	I	
169	Eagle L	8/25/2012	epi	26	25	2	3	3	2	0	0	2.10	0.90	<0.30	<0.551		1.88	1.51	I	
169	Eagle L	9/7/2012	epi	26	22	2	4	4	2	0	0	0.70	0.20	<0.30	<3.299		0.89	0.79	I	
169	Eagle L	7/15/2013	epi	31	27	1	3	3	2	4	0	0.60	0.70	<0.30	<0.910		0.60	0.00	I	B
169	Eagle L	7/30/2013	epi	22	23	1	4	4	2	4	0	0.05	0.90	<0.30	<0.380		0.90	0.00	I	dh
169	Eagle L	7/30/2013	epi											<0.60	<0.680		18.50	0.00		
169	Eagle L	8/2/2013	epi	22	22	1	4	4	2	0	0	2.70	0.70	<0.30	<0.380		0.40	0.00	I	I
169	Eagle L	8/25/2013	epi	20	22	1	4	4	2	0	0	1.00	0.50	<0.30	<0.570		0.00	0.00	I	I
169	Eagle L	9/9/2013	epi	11	20	1	3	4	2	0	0	2.60	0.60	0.38	<19.130		0.10	0.00	I	
169	Eagle L	9/23/2013	epi	11	18	1	3	3	2	0	0	2.20	0.60	<0.30	<19.130		0.00	0.00	I	I
169	Eagle L	10/8/2013	epi	12	16	1	3	3	2	0	0	1.80	0.70	<0.30	<0.090		3.50	2.20	I	
169	Eagle L	10/21/2013	epi	8	14							2.30	0.70	<0.30	<0.090		0.10	0.00		
169	Eagle L	7/15/2013	hypo		26															
169	Eagle L	8/2/2013	hypo		22															
169	Eagle L	9/9/2013	hypo		20															
169	Eagle L	10/8/2013	hypo		16															

Legend Information

<i>Indicator</i>	<i>Description</i>	<i>Detection Limit</i>	<i>Standard (S) / Criteria (C)</i>
General Information			
Lnum	lake number (unique to CSLAP)		
Lname	name of lake (as it appears in the Gazetteer of NYS Lakes)		
Date	sampling date		
Field Parameters			
Zbot	lake depth at sampling point, meters (m)		
Zsd	Secchi disk transparency or clarity	0.1m	1.2m (C)
Zsamp	water sample depth (m) (epi = epilimnion or surface; bot = bottom)	0.1m	none
Tair	air temperature (C)	-10C	none
TH20	water temperature (C)	-10C	none
Laboratory Parameters			
Tot.P	total phosphorus (mg/l)	0.003 mg/l	0.020 mg/l (C)
NOx	nitrate + nitrite (mg/l)	0.01 mg/l	10 mg/l NO3 (S), 2 mg/l NO2 (S)
NH4	total ammonia (mg/l)	0.01 mg/l	2 mg/l NH4 (S)
TN	total nitrogen (mg/l)	0.01 mg/l	none
TN/TP	nitrogen to phosphorus (molar) ratio, = (TKN + NOx)*2.2/TP		none
TCOLOR	true (filtered) color (ptu, platinum color units)	1 ptu	none
pH	powers of hydrogen (S.U., standard pH units)	0.1 S.U.	6.5, 8.5 S.U. (S)
Cond25	specific conductance, corrected to 25C (umho/cm)	1 umho/cm	none
Ca	calcium (mg/l)	1 mg/l	none
Chl.a	chlorophyll a (ug/l)	0.01 ug/l	none
Fe	iron (mg/l)	0.1 mg/l	1.0 mg/l (S)
Mn	manganese (mg/l)	0.01 mg/l	0.3 mg/l (S)
As	arsenic (ug/l)	1 ug/l	10 ug/l (S)
AQ-PC	Phycocyanin (aquafior) (unitless)	1 unit	none
AQ-Chl	Chlorophyll a (aquafior) (ug/l)	1 ug/l	none
MC-LR	Microcystis-LR (ug/l)	0.01 ug/l	1 ug/l potable (C) 20 ug/l swimming (C)
Ana	Anatoxin-a (ug/l)	variable	none
Cyl	Cylindrospermopsin (ug/l)	0.1 ug/l	none
FP-Chl, FP-BG	Fluoroprobe total chlorophyll, fluoroprobe blue-green chlorophyll (ug/l)	0.1 ug/l	none
Lake Assessment			
QA	water quality assessment; 1 = crystal clear, 2 = not quite crystal clear, 3 = definite algae greenness, 4 = high algae levels, 5 = severely high algae levels		
QB	aquatic plant assessment; 1 = no plants visible, 2 = plants below surface, 3 = plants at surface, 4 = plants dense at surface, 5 = surface plant coverage		
QC	recreational assessment; 1 = could not be nicer, 2 = excellent, 3 = slightly impaired, 4 = substantially impaired, 5 = lake not usable		
QD	reasons for recreational assessment; 1 = poor water clarity, 2 = excessive weeds, 3 = too much algae, 4 = lake looks bad, 5 = poor weather, 6 = litter/surface debris, 7 = too many lake users, 8 = other		
QF, QG	Health and safety issues today (QF) and past week (QG); 0 = none, 1 = taste/odor, 2 = GI illness humans/animals, 3 = swimmers itch, 4 = algae blooms, 5 = dead fish, 6 = unusual animals, 7 = other		
HAB form, Shore HAB	HAB evaluation; A = spilled paint, B = pea soup, C = streaks, D = green dots, E = bubbling scum, F = green/brown tint, G = duckweed, H = other, I = no bloom		

Appendix B- Monthly Evaluation of Eagle Lake Data, 2006-2013

June Data

	2006	2007	2008	2009	2010	2011	2012	2013
<i>Zsd</i>	NORMAL	NORMAL	NORMAL	NORMAL	NORMAL	LOW	NORMAL	
<i>TP</i>	NORMAL	NORMAL	NORMAL	NORMAL	NORMAL	NORMAL	NORMAL	
<i>Chl.a</i>	NORMAL	NORMAL	LOW	NORMAL	NORMAL	NORMAL	NORMAL	
<i>NOx</i>	NORMAL	NORMAL	NORMAL	NORMAL	HIGH	NORMAL	NORMAL	
<i>NH4</i>	NORMAL	NORMAL	NORMAL	HIGH	NORMAL	NORMAL	NORMAL	
<i>TN</i>	NORMAL	NORMAL	NORMAL	NORMAL	NORMAL	NORMAL	NORMAL	
<i>pH</i>	NORMAL	NORMAL	NORMAL	NORMAL	NORMAL	NORMAL	NORMAL	
<i>SpCond</i>	LOW	LOW	HIGH	NORMAL	NORMAL	HIGH	NORMAL	
<i>Color</i>	NORMAL	NORMAL	NORMAL	NORMAL	LOW	NORMAL	NORMAL	
<i>Ca</i>	NORMAL	LOW	NORMAL	NORMAL		NORMAL	LOW	
<i>QA</i>	NORMAL	NORMAL	NORMAL	NORMAL	NORMAL	NORMAL	NORMAL	
<i>QB</i>	NORMAL	NORMAL	NORMAL	NORMAL	NORMAL	LOW	NORMAL	
<i>QC</i>	LOW	NORMAL	NORMAL	NORMAL	NORMAL	NORMAL	NORMAL	
<i>TH20</i>	NORMAL	NORMAL	NORMAL	NORMAL	NORMAL	NORMAL	NORMAL	

High = average monthly reading > 90th percentile reading for lake, 2000-2010

Low = average monthly reading < 10th percentile reading for lake, 2000-2010

Normal = average monthly reading between 10th and 90th percentile reading for lake, 2000-2010

July Data

	2006	2007	2008	2009	2010	2011	2012	2013
<i>Zsd</i>	NORMAL	NORMAL	NORMAL	NORMAL	NORMAL	NORMAL	NORMAL	NORMAL
<i>TP</i>	NORMAL	NORMAL	LOW	NORMAL	NORMAL	NORMAL	HIGH	HIGH
<i>Chl.a</i>	NORMAL	NORMAL	LOW	NORMAL	NORMAL	NORMAL	NORMAL	NORMAL
<i>NOx</i>	NORMAL	NORMAL	NORMAL	NORMAL	NORMAL	NORMAL	NORMAL	HIGH
<i>NH4</i>	NORMAL	NORMAL	NORMAL	HIGH	NORMAL	NORMAL	NORMAL	NORMAL
<i>TN</i>	NORMAL	HIGH	NORMAL	NORMAL	NORMAL	NORMAL	NORMAL	NORMAL
<i>pH</i>	NORMAL	NORMAL	NORMAL	NORMAL	NORMAL	HIGH	NORMAL	NORMAL
<i>SpCond</i>	NORMAL	NORMAL	NORMAL	LOW	HIGH	NORMAL	NORMAL	NORMAL
<i>Color</i>	NORMAL	NORMAL	NORMAL	HIGH	NORMAL	NORMAL	NORMAL	NORMAL
<i>Ca</i>	NORMAL			HIGH	HIGH	NORMAL	NORMAL	
<i>QA</i>	NORMAL	NORMAL	NORMAL	NORMAL	NORMAL	NORMAL	NORMAL	LOW
<i>QB</i>	NORMAL	NORMAL	NORMAL	NORMAL	NORMAL	NORMAL	NORMAL	HIGH
<i>QC</i>	NORMAL	NORMAL	NORMAL	NORMAL	NORMAL	NORMAL	NORMAL	HIGH
<i>TH20</i>	NORMAL	NORMAL	NORMAL	NORMAL	NORMAL	NORMAL	NORMAL	NORMAL

High = average monthly reading > 90th percentile reading for lake, 2000-2010

Low = average monthly reading < 10th percentile reading for lake, 2000-2010

Normal = average monthly reading between 10th and 90th percentile reading for lake, 2000-2010

August Data

	2006	2007	2008	2009	2010	2011	2012	2013
<i>Zsd</i>	NORMAL	NORMAL	NORMAL	NORMAL	NORMAL	NORMAL	NORMAL	HIGH
<i>TP</i>	NORMAL	NORMAL	NORMAL	NORMAL	NORMAL	NORMAL	HIGH	NORMAL
<i>Chl.a</i>	NORMAL	NORMAL	LOW	NORMAL	NORMAL	HIGH	NORMAL	NORMAL
<i>NOx</i>	NORMAL	HIGH	NORMAL	NORMAL	NORMAL	NORMAL	NORMAL	NORMAL
<i>NH4</i>	NORMAL	NORMAL	NORMAL	HIGH	NORMAL	NORMAL	NORMAL	NORMAL
<i>TN</i>	NORMAL	NORMAL	NORMAL	NORMAL	NORMAL	NORMAL	NORMAL	NORMAL
<i>pH</i>	NORMAL	NORMAL	NORMAL	NORMAL	NORMAL	HIGH	NORMAL	NORMAL
<i>SpCond</i>	NORMAL	NORMAL	NORMAL	LOW	NORMAL	NORMAL	NORMAL	NORMAL
<i>Color</i>	NORMAL	NORMAL	NORMAL	NORMAL	NORMAL	NORMAL	NORMAL	NORMAL
<i>Ca</i>		NORMAL	NORMAL					
<i>QA</i>	NORMAL	NORMAL	NORMAL	NORMAL	NORMAL	NORMAL	NORMAL	LOW
<i>QB</i>	NORMAL	NORMAL	NORMAL	NORMAL	NORMAL	NORMAL	NORMAL	HIGH
<i>QC</i>	HIGH	NORMAL	NORMAL	NORMAL	NORMAL	NORMAL	NORMAL	HIGH
<i>TH20</i>	NORMAL	NORMAL	NORMAL	NORMAL	NORMAL	NORMAL	NORMAL	NORMAL

High = average monthly reading > 90th percentile reading for lake, 2000-2010

Low = average monthly reading < 10th percentile reading for lake, 2000-2010

Normal = average monthly reading between 10th and 90th percentile reading for lake, 2000-2010

September Data

	2006	2007	2008	2009	2010	2011	2012	2013
<i>Zsd</i>	HIGH	NORMAL	NORMAL	NORMAL		NORMAL	NORMAL	HIGH
<i>TP</i>	LOW	NORMAL	LOW	NORMAL		NORMAL	HIGH	NORMAL
<i>Chl.a</i>	NORMAL	NORMAL	NORMAL	NORMAL		HIGH	HIGH	NORMAL
<i>NOx</i>	NORMAL	NORMAL	NORMAL	NORMAL		HIGH	NORMAL	
<i>NH4</i>	NORMAL	NORMAL	NORMAL	HIGH		NORMAL	NORMAL	NORMAL
<i>TN</i>	NORMAL	HIGH	NORMAL	NORMAL		NORMAL	NORMAL	NORMAL
<i>pH</i>	NORMAL	NORMAL	NORMAL	NORMAL		NORMAL	NORMAL	NORMAL
<i>SpCond</i>	NORMAL	NORMAL	NORMAL	NORMAL		NORMAL	NORMAL	NORMAL
<i>Color</i>	LOW	NORMAL	NORMAL	NORMAL		NORMAL	NORMAL	NORMAL
<i>Ca</i>								
<i>QA</i>	NORMAL	NORMAL	NORMAL	HIGH		NORMAL	NORMAL	LOW
<i>QB</i>	NORMAL	NORMAL	NORMAL	HIGH		NORMAL	HIGH	NORMAL
<i>QC</i>	NORMAL	HIGH	HIGH	HIGH		NORMAL	HIGH	HIGH
<i>TH20</i>	NORMAL	NORMAL	NORMAL	NORMAL		NORMAL	NORMAL	NORMAL

High = average monthly reading > 90th percentile reading for lake, 2000-2010

Low = average monthly reading < 10th percentile reading for lake, 2000-2010

Normal = average monthly reading between 10th and 90th percentile reading for lake, 2000-2010

Appendix C- Priority Waterbody Listing for Eagle Lake

Eagle Lake (1104-0235)

Need Verific

Waterbody Location Information

Revised: 02/09/2007

Water Index No:	H-391..39-P432..P438	Drain Basin:	Upper Hudson River
Hydro Unit Code:	02020001/090	Str Class:	B
Waterbody Type:	Lake	Reg/County:	5/Essex Co. (16)
Waterbody Size:	422.3 Acres	Quad Map:	GRAPHITE (F-26-3)
Seg Description:	entire lake		

Water Quality Problem/Issue Information (CAPS indicate MAJOR Use Impacts/Pollutants/Sources)

Use(s) Impacted	Severity	Problem Documentation
Recreation	Stressed	Possible

Type of Pollutant(s)

Known: ---
Suspected: ALGAL/WEED GROWTH, PROBLEM SPECIES (Eurasian milfoil)
Possible: ---

Source(s) of Pollutant(s)

Known: ---
Suspected: HABITAT MODIFICATION
Possible: ---

Resolution/Management Information

Issue Resolvability:	1 (Needs Verification/Study (see STATUS))	
Verification Status:	1 (Waterbody Nominated, Problem Not Verified)	
Lead Agency/Office:	DOW/BWAM	Resolution Potential: Medium
TMDL/303d Status:	n/a ()	

Further Details

Recreational uses in Eagle Lake may be threatened by non-native invasive aquatic plant growth. Other water chemistry indicators suggest good water quality.

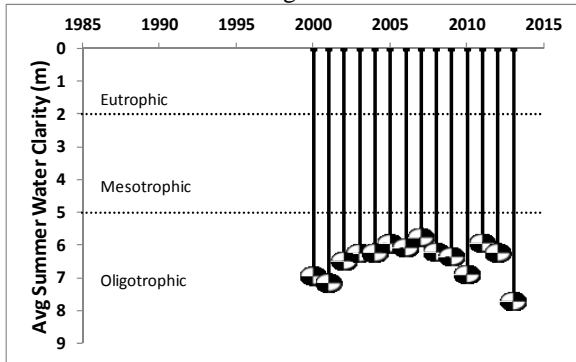
Eagle Lake has been sampled as part of the NYSDEC Citizen Statewide Lake Assessment Program (CSLAP) beginning in 2000 and continuing through 2005. An Interpretive Summary report of the findings of this sampling was published in 2006. These data indicate that the lake continues to be best characterized as oligotrophic, or highly unproductive. Phosphorus levels in the lake are well below criteria that would indicate impacted recreational uses and transparency measurements easily satisfy what is recommended for swimming beaches. (DEC/DOW, BWAM/CSLAP, May 2006)

Public perception of the lake and its uses is also evaluated as part of the CSLAP program. These assessment indicate recreational suitability of the lake to be somewhat impacted, primarily due to aquatic weed growth. Recreational conditions in the lake have been most often described as "slightly impacted" for most uses. The lake is regularly described as "not quite crystal clear." Such an assessment is atypical of lakes with similar water chemistry, but indicative of lakes with plant densities that grow to the lake surface. No aquatic plant surveys have been conducted through the CSLAP program, but Eurasian milfoil has been identified by other sources. (DEC/DOW, BWAM/CSLAP, May 2006)

Appendix D- Long Term Trends: Eagle Lake

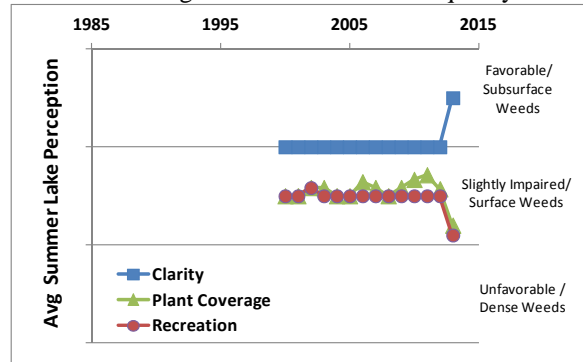
Long Term Trends: Water Clarity

- No trends apparent
- Most readings typical of *oligotrophic* lakes, consistent with algae and TP levels



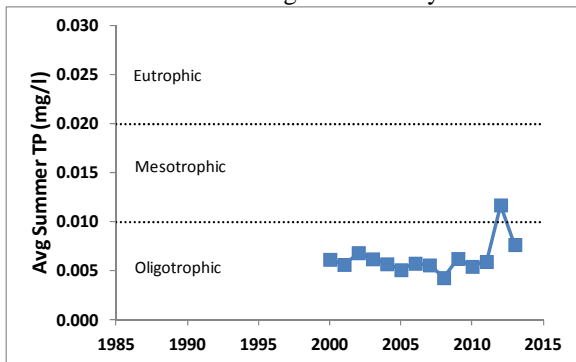
Long Term Trends: Lake Perception

- No trends apparent
- Recreational perception more closely linked to changes in weeds than water quality



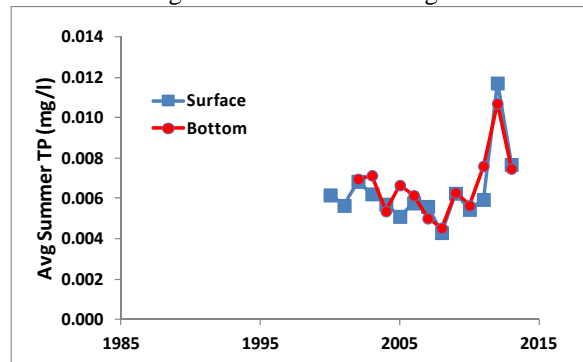
Long Term Trends: Phosphorus

- No trends despite higher 2012-2013 TP
- Most readings typical of *oligotrophic* lakes, consistent with algae and clarity



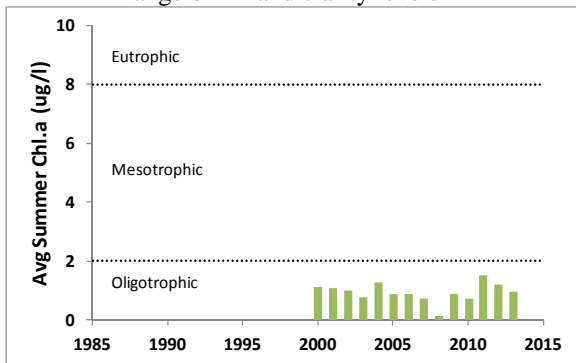
Long Term Trends: Bottom Phosphorus

- Similar surface and bottom TP
- Bottom TP may indicate little to no nutrient loading to surface levels during late summer



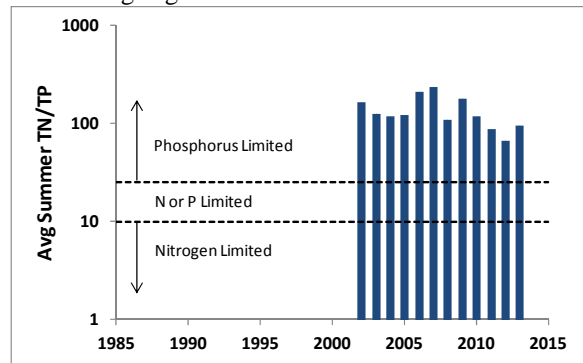
Long Term Trends: Chlorophyll a

- No trends apparent
- Most readings typical of *oligotrophic* lakes, in range of TP and clarity levels



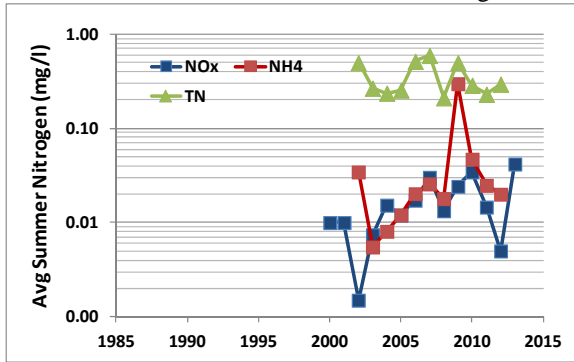
Long Term Trends: N:P Ratio

- No trends apparent
- Most readings indicate phosphorus limits algae growth



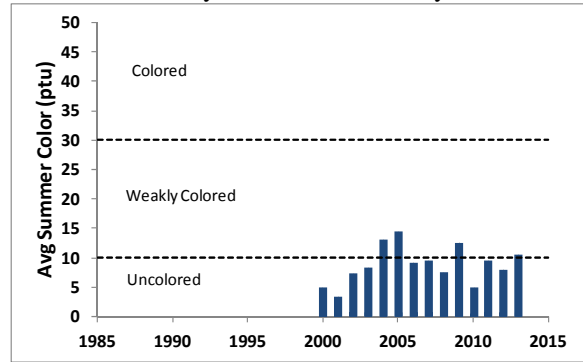
Long Term Trends: Nitrogen

- No trends apparent despite high variability (perhaps slight increase in NOx)
- Low NOx, ammonia and TN readings



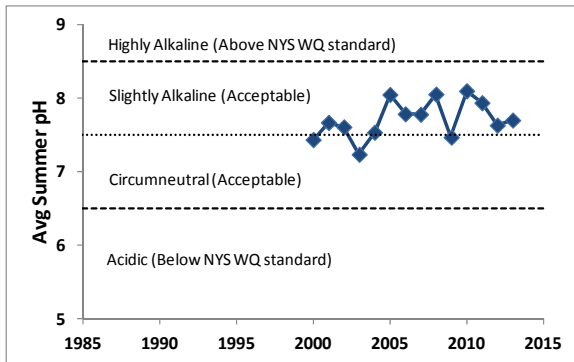
Long Term Trends: Color

- No trends apparent despite rise since 2002
- Most readings typical of *uncolored* lakes with likely little effect on clarity



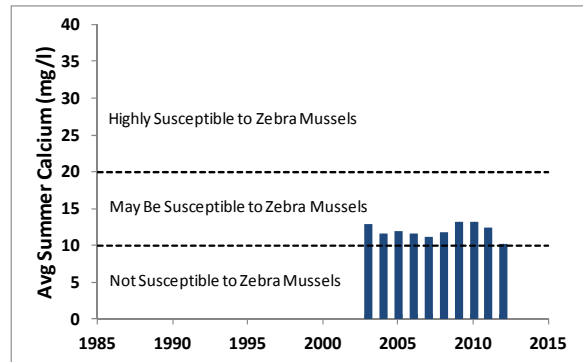
Long Term Trends: pH

- Slight increase not statistically significant
- Most readings typical of *slightly alkaline* to *circumneutral* lakes



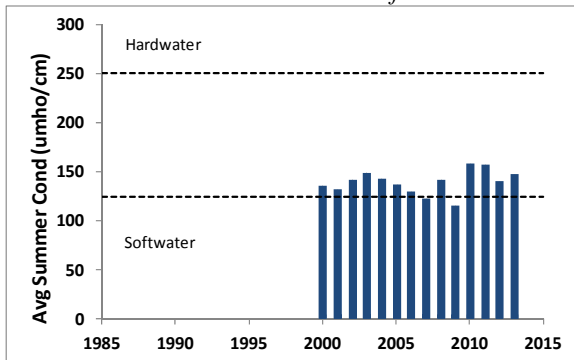
Long Term Trends: Calcium

- No trends apparent
- Most readings indicate low susceptibility to zebra mussels



Long Term Trends: Conductivity

- No trends apparent
- Most readings typical of lakes with *intermediate hardness* to *soft water*



Long Term Trends: Water Temperature

- No trends apparent
- Limited data indicates that bottom and surface temperatures similar

